

Stop This Invader!



Spotted Lanternfly

Erica Smyers

What Is It?

The spotted lanternfly is an invasive insect that attacks over 100 types of plants. It is rapidly spreading, primarily by hitchhiking, and has been found in Indiana.

This pest kills grapes, weakens many types of trees and bushes, and is a nuisance to homeowners and businesses.

This planthopper weakens plants by feeding on sap. It excretes a sugary substance called honeydew, which attracts stinging insects, promotes the growth of sooty mold, and causes a messy nuisance for residents.

To help stop the spread of spotted lanternfly, learn what it looks like, inspect any materials you are shipping or receiving, and report it if you see it!



Erica Smyers

See it? Report it!

DEPP@dnr.in.gov, eddmmaps.org, or 1-866-663-9684

Know What to Look For

Spotted lanternfly adults are about 1 inch long and a half inch wide with wings folded.

Nymphs are $\frac{1}{8}$ to $\frac{1}{2}$ inch long and develop through four stages, all of which are wingless.

A.

Egg mass, fresh

B.

Egg mass, older

Can be found September through June



A

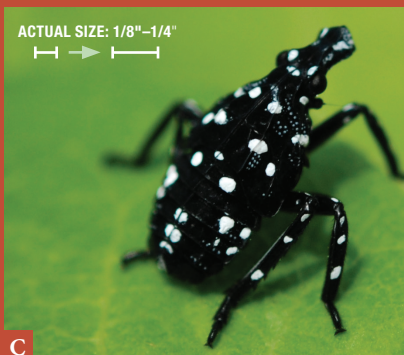
PA Dep

C.

Nymph, early stage *Can be found late April through July*

D.

Nymph, late stage *Can be found July through September*



C

PA Dep

E.

Adult, wings closed

F.

Adult, wings open *Can be found July through December*



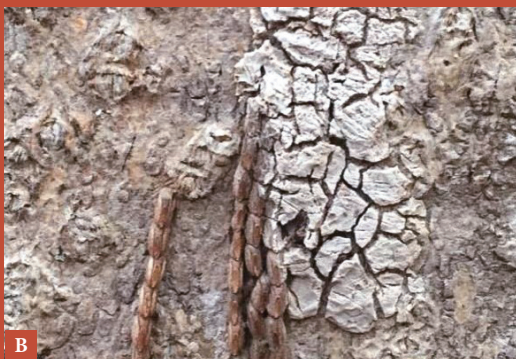
E

PA Dep

Egg masses have a gray, mud-like covering, which can become dry and cracked over time. Older egg masses may lose their covering and appear as columns of 30–50 seed-like eggs. Egg masses can be found on trees, rocks, vehicles, and other surfaces.



Department of Agriculture



B

Emelie Swackhamer



Department of Agriculture



D

ACTUAL SIZE: 1/2"

PA Department of Agriculture



Department of Agriculture



F

PA Department of Agriculture

Report a Sighting

1. Take a picture and note your location.
2. If you can, collect a sample of the insect by catching it and placing it in a freezer. You can use any container available as long as it has a tight seal (like a water bottle) so that the spotted lanternfly can't escape.
3. Report the sighting at DEPP@dnr.in.gov, eddmaps.org, or 1-866-663-9684.

Stop the Spread

1. Check your car and outdoor equipment for spotted lanternfly eggs, nymphs, and adults before driving or moving to a new location.
2. Don't move firewood because it can spread spotted lanternfly and many other invasive insects.
3. Stay up to date with the latest spotted lanternfly information by subscribing to our newsletters (www.purduelandscapereport.org/ and www.in.gov/dnr/entomology/entomology-weekly-review/) and following us on Facebook, Twitter, and Instagram (@[reportINvasive](https://www.instagram.com/reportINvasive) and @[INdnrInvasive](https://www.instagram.com/INdnrInvasive))
4. Share your spotted lanternfly knowledge with others!



Adapted with permission from material produced by Pennsylvania Department of Agriculture.