

# STOP THIS INVADER!

## SPOTTED LANTERNFLY



ACTUAL SIZE: 1"

**Adult** (with wings closed) can be found July–December

PA Department of Agriculture



ACTUAL SIZE: 1/4"

**Nymph** (early stage) can be found late April–July

PA Department of Agriculture



**Egg mass** (fresh) can be found September–December

PA Department of Agriculture



**Adult** (with wings open) can be found July–December

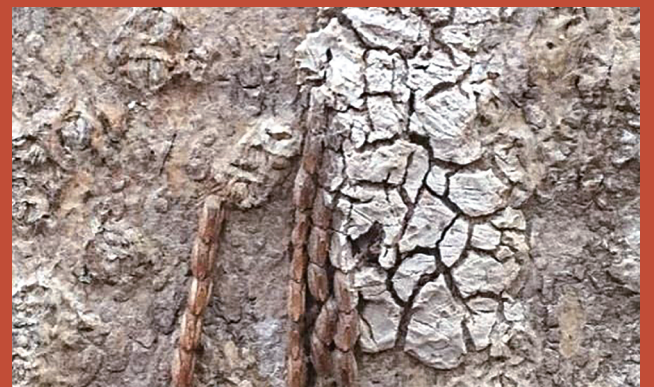
PA Department of Agriculture



ACTUAL SIZE: 1/2"

**Nymph** (late stage) can be found July–September

PA Department of Agriculture



**Egg mass** (older) can be found January–June

Emelle Swackhamer

**THIS INVASIVE INSECT IS OF CONCERN** to Indiana's grape, hardwood, nursery industries, and is a nuisance to homeowners and businesses. You can help slow its spread!

**REPORT** spotted lanternfly sightings at [DEPP@dnr.in.gov](mailto:DEPP@dnr.in.gov), [eddmaps.org](http://eddmaps.org), or 1-866-663-9684

**DESTROY** all life stages that you find. Check your car and outdoor equipment before traveling.

**SHARE** your knowledge with others!

For more information, visit <https://bit.ly/3NoCTfm> or [reportinvasive.com](http://reportinvasive.com).